

CANADIAN MANUFACTURER OF MECO SYSTEMS®



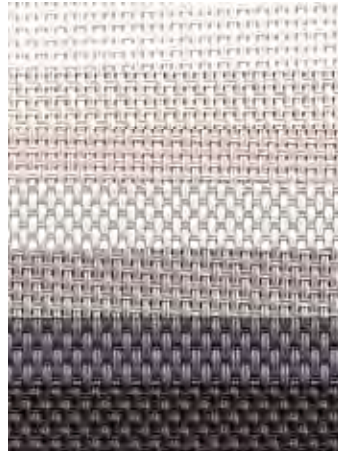
MechoShade ThermoVeil, EuroVeil, Equinox™ and EuroTwill™ shade cloths are offered with the broadest Limited Lifetime Warranty available\*; assuring the end-user a product that will provide many years of trouble-free performance.

## EcoVeil® 1750

### DENSE BASKET WEAVE

### Available Colours

- White 1751
- Eggshell 1766
- Beige 1752
- Silver Birch 1769
- Grey 1763
- Shadow Grey 1770
- Black/Brown 1754



### Fabric Specifications

**Stock Widths** 126"

**Openness Factor** 1%

**Composition** 100% ThermoPlastic Olefin

**Thickness** 0.0358"

**Weight** 14.51 oz/yd<sup>2</sup>

**Fire Rating** CAN/ULC-S109-M87

**Acoustic Performance** 0.65 NRC/0.67 SAA

**Cleaning Instructions** Soap & Water

**Spline** Snap Lock

**Railroaded** Not Recommended

**Batten or Seams** Not Recommended

### EcoVeil Series Shadecloth

**100% recyclable, FR, and PVC-free**

This series is composed of a technically advanced material woven in a 2 x 2 basket-weave pattern and is a truly eco-effective solar sunscreen.

As a Cradle to Cradle Certified<sup>CM</sup> product, it can be reclaimed, recycled, and remain in a perpetual loop of continuous use.

**One of Environmental Building News's Top - 10 best products**

**Received two 2009 NeoCon® Silver awards for EcoVeil® Naturals**



**Fire Rated**

\* Actual fabric colours may vary from pictures, Fabric stock levels may vary

\* Openness factors are approximate. Mockups recommended. Specification subject to change without notice. ©Copyright 2008, MechoShade Systems, Inc., Long Island City, NY. All rights reserved. MechoShade, ElectroShade, DualShade, ThermoVeil and EuroVeil are registered trademarks of MechoShade Systems, Inc. EuroTwill; Equi-nox are trademarks of Mechoshade Systems, Inc. Fraser Shading Systems Inc. is an approved Canadian fabricator for MechoShade.

# EcoVeil® 1750 Shade Cloth Properties

## 1750 Series (1% open)

1750 Series (1% open)			Acoustic Performance		.65 NRC .67 SAA		Mesh Weight		14.51 oz/yd <sup>2</sup>		Fabric Thickness		0.0358 in
#	Name	Fabric Content	Solar Optical Properties				Single Shading Coefficient			Insulating Shading Coefficient			
			Ts	Rs	As	Tv	1/8CL	1/4CL	1/4HA	1/2CL	1CL	1HA	
1751	White	100% Thermoplastic Olefin (TPO)	17	72	12	14	0.29	0.30	0.30	0.28	0.29	0.24	
1769	Silver Birch	100% Thermoplastic Olefin (TPO)	7	54	39	5	0.40	0.39	0.35	0.38	0.37	0.28	
1766	Eggshell	100% Thermoplastic Olefin (TPO)	9	60	32	5	0.36	0.36	0.33	0.34	0.34	0.27	
1752	Beige	100% Thermoplastic Olefin (TPO)	5	51	44	2	0.41	0.41	0.36	0.39	0.38	0.29	
1763	Grey	100% Thermoplastic Olefin (TPO)	2	25	73	1	0.59	0.56	0.44	0.56	0.52	0.36	
1770	Shadow Grey	100% Thermoplastic Olefin (TPO)	1	9	90	1	0.70	0.66	0.49	0.66	0.60	0.41	
1754	Black/Brown	100% Thermoplastic Olefin (TPO)	0	5	95	0	0.72	0.68	0.50	0.68	0.62	0.42	

## GREENGUARD Gold Certification Criteria for Building Products and Interior Finishes

Criteria	CAS Number	Maximum Allowable Predicted Concentration	Units
TVOC <sup>(A)</sup>	-	0.22	mg/m <sup>3</sup>
Formaldehyde	50-00-0	9 (7.3 ppb)	µg/m <sup>3</sup>
Total Aldehydes <sup>(B)</sup>	-	0.043	ppm
4-Phenylcyclohexene	4994-16-5	6.5	µg/m <sup>3</sup>
Particle Matter less than 10 µm <sup>(C)</sup>	-	20	µg/m <sup>3</sup>
1-Methyl-2-pyrrolidinone <sup>(D)</sup>	872-50-4	160	µg/m <sup>3</sup>
Individual VOCs <sup>(E)</sup>	-	1/2 CREL or 1/100th TLV	-

(A) Defined to be the total response of measured VOCs falling within the C<sub>6</sub> – C<sub>16</sub> range, with responses calibrated to a toluene surrogate. Maximum allowable predicted TVOC concentrations for GREENGUARD Gold (0.22 mg/m<sup>3</sup>) fall in the range of 0.5 mg/m<sup>3</sup> or less, as specified in CDPH Standard Method v1.2.

(B) The sum of all measured normal aldehydes from formaldehyde through nonanal, plus benzaldehyde, individually calibrated to a compound specific standard. Heptanal through nonanal are measured via TD/GC/MS analysis and the remaining aldehydes are measured using HPLC/UV analysis.

(C) Particle emission requirement only applicable to HVAC Duct Products with exposed surface area in air streams (a forced air test with specific test method) and for wood finishing (sanding) systems.

(D) Based on the CA Prop 65 Maximum Allowable Dose Level for inhalation of 3,200 µg/day and an inhalation rate of 20 m<sup>3</sup>/day

(E) Allowable levels for chemicals not listed are derived from the lower of 1/2 the California Office of Environmental Health Hazard Assessment (OEHA) Chronic Reference Exposure Level (CREL) as required per the CDPH/EHLB/Standard Method v1.2 and BIFMA level credit 7.6.2 and 1/100th of the Threshold Limit Value (TLV) industrial work place standard (Reference: American Conference of Government Industrial Hygienists, 6500 Glenway, Building D-7, and Cincinnati, OH 45211-4438).

# CERTIFICATE OF COMPLIANCE



## Mecho

### EcoVeil® Shadecloth Collection 0950, 1550, 1350 and 1750 Series

101764-420

Certificate Number

06/03/2009 - 11/28/2024

Certificate Period

Certified

Status

UL 2818 - 2022 Gold Standard for Chemical Emissions for Building Materials, Finishes and Furnishings

Window treatments are determined compliant in accordance with California Department of Public Health (CDPH) Standard Method V1.2-2017 using an Office and Classroom Environment.

Product tested in accordance with UL 2821 test method to show compliance to emission limits on UL 2818. Section 7.1 and 7.2.



UL investigated representative samples of the identified Product(s) to the identified Standard(s) or other requirements in accordance with the agreements and any applicable program service terms in place between UL and the Certificate Holder (collectively "Agreement"). The Certificate Holder is authorized to use the UL Mark for the identified Product(s) manufactured at the production site(s) covered by the UL Test Report, in accordance with the terms of the Agreement. This Certificate is valid for the identified dates unless there is non-compliance with the Agreement.